


# eBee VISION



Low acoustic  
signature



Low specular  
reflection



## Real-time situational awareness UAS

Get HD live video insights into rapidly-changing environments, even in GNSS-denied conditions. Ensure the success of your Intelligence, Surveillance, and Reconnaissance (ISR) missions. eBee VISION can be easily carried, hand-launched and operated by a single pilot.

Light weight  
**4 lbs / 1.8 kg**

Deployment  
**3 min**

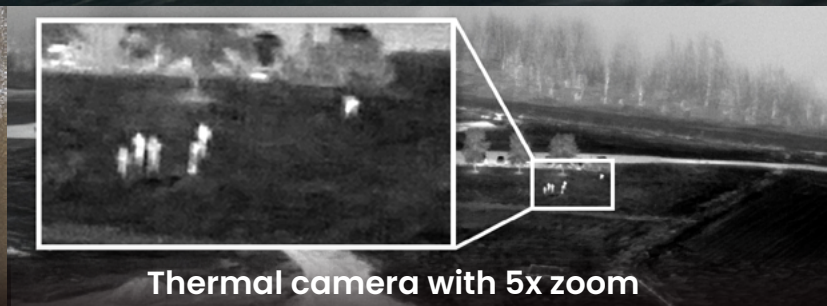
Flight time  
**90 min**

Wireless range  
**Up to 12 mi / 20 km**

Cyber-secure  
**AES-256 encryption**



**RGB camera with 32x zoom**



**Thermal camera with 5x zoom**

## Detect, track and geo-locate

Simultaneously capture, view and record HD video and imagery.



**Flight plan**  
Define a flight plan and seamlessly adapt it during the flight.



**Observation mode**  
Maintain observation from a safe distance.



**Scouting mode**  
Explore and track moving targets.



**Cursor-on-Target**  
Locate targets using image coordinates.



**Manual flight**  
Control the drone for your specific flight maneuvers.



**Mapping mode**  
Create circular or grid mapping patterns.



## Drone specifications

Wingspan	46.4 in / 118 cm
Fuselage material	Expanded Polypropylene (EPP, 30 g/L)
Frame material	Carbon fiber & reinforced injected polymer
Weight	4 lbs / 1.8 kg
Transport case	Backpack and hardcase

## Flight performance

Cruise speed	28 mph to 50 mph (45 km/h or 12.5 m/s to 80 km/h or 22.5 m/s)
Max speed	50 mph (80 km/h or 22.5 m/s)
Max wind resistance	38 mph (61 km/h or 17 m/s)
Max flight time	90 minutes
Service temperature	14°F, 120°F / -10°C, +49°C



Validated as  
cyber-secure



Radio data link  
encryption AES-256



Drone log file  
suppression



Encrypted  
SD card

**eBee VISION is NDAA-compliant**

## Remote controller specifications

Screen	7" sunlight viewable screen with rain mode and glove touch
Video	Continuous HD video feed from RGB and thermal sensors
Battery	1h30 hours battery life with warm-swap capability

## RGB sensor specifications

Sensor	2 sensors 1/2.4"
Resolution	5344 x 4016
Focal length	4mm / 16mm
Field of view (H x V)	72° x 45° / 21° x 12°
ISO range	100-3200
Zoom	16x optical / 2x digital
Video resolution	1920 x 1080 record / 1280 x 720 stream
Video format	MPEG-TS (H.264) + embedded STANAG 4609

## Thermal sensor specifications

Sensor	FLIR BOSON
Resolution	640 x 512
Focal length	18mm
Field of view (H x V)	24° x 19°
ISO range	-
Zoom	5x digital
Video resolution	1280 x 720 record and stream
Video format	MPEG-TS (H.264) + embedded STANAG 4609

## eBee VISION system includes



GCS



Radio module with  
short range antenna



Radio module  
auxiliary battery



Radio module  
auxiliary battery charger



2x Smart batteries



Smart charger



Backpack



Hardcase

SD card 64GB

1x Spare propeller

1x Spare pitot

